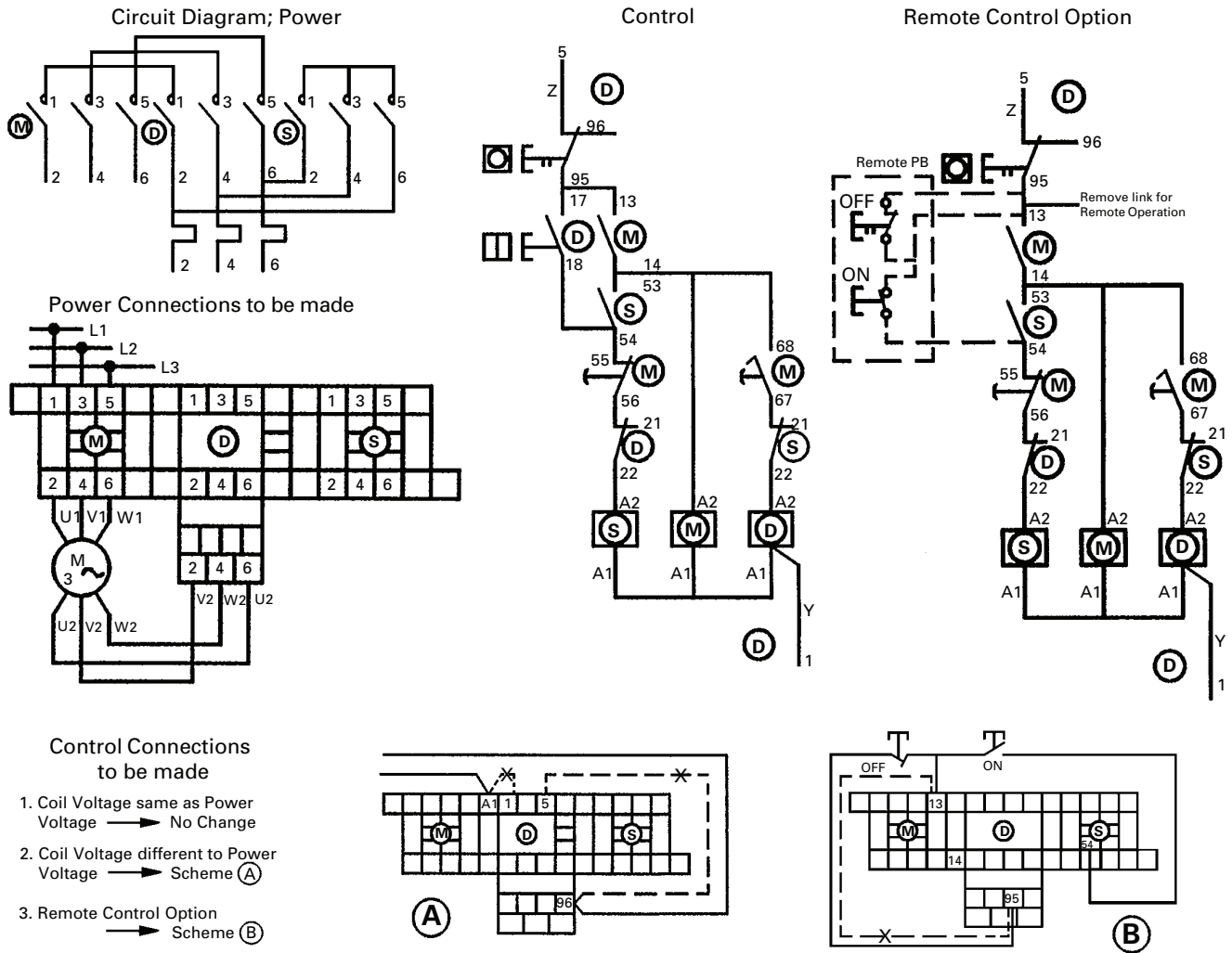


10.4

Technical data

Enclosed motor, heating and lighting control

25kW Star Delta starter without switch disconnect, IP 54 metalclad surface mounting enclosure, wiring diagram



Short circuit protection

| Overload Relay list number | Motor FLC Ie (A) | SCPD Back-up protection MAX HRC fuse BS88:1 aM (A) | Back-up protection Max MCB Type C |
|----------------------------|------------------|-------------------------------------------------------|--------------------------------------|
| Direct on line | | | |
| 8TT87 | 0.63–1 | 4 | EMCH306 |
| 8TT88 | 1–1.6 | 6 | EMCH306 |
| 8TT89 | 1.6–2.5 | 10 | EMCH306 |
| 8TT90 | 2.5–4 | 16 | EMCH310 |
| 8TT91 | 4–6 | 16 | EMCH310 |
| 8TT98 | 5.5–8.0 | 20 | EMCH316 |
| 8TT92 | 7–10 | 25 | EMCH320 |
| 8TT93 | 10–13 | 32 | EMCH320 |
| 8TT94 | 13–18 | 40 | EMCH332 |
| 8TT104 | 18–25 | 50 | EMCH340 |
| Star Delta | | | |
| 8TT90SD | 4.3–6.9 | 16 | EMCH310 |
| 8TT91SD | 6.9–10.4 | 16 | EMCH310 |
| 8TT98SD | 9.5–13.8 | 20 | EMCH316 |
| 8TT92SD | 12.1–17.3 | 25 | EMCH320 |
| 8TT93SD | 17.3–22.5 | 32 | EMCH320 |
| 8TT94SD | 22.5–31 | 40 | EMCH332 |
| 8TT104SD | 31–43 | 50 | EMCH340 |